

12英寸全自动JIG-SAW切割分选一体机  
12 INCH FULLY-AUTOMATIC JIG SAW AND SORT MACHINE

# JDV-9230

- 最大有效加工尺寸 (mm)  
Maximum effective product size (mm)

**300\*100**

- 主轴配置方式  
Configuration method of spindle

**对向式双主轴+双工作台**

Opposed dual-spindle + Double-workbench



## • 特点 FEATURE

配备全自动排渣收渣结构，减少人力维护成本。

Equipped with automatic slag discharge and slag collection structure, reducing human maintenance costs.

专用治具，高真空吸附基板，无需贴膜，减掉了贴膜和解胶的工艺流程和相关的成本。

Special jig, high vacuum adsorption substrate, no need to apply film, minus the process of applying film and decoupling and the associated costs.

双轴高效切割模式，独立的视觉系统可以保证对准、切割同时进行，可提升切割效率。

Dual-spindle high efficiency sawing mode, independent vision system can ensure alignment and cutting simultaneously, which can improve cutting efficiency.

双工作平台循环工作，充分利用设备各结构，可提升切割效率。

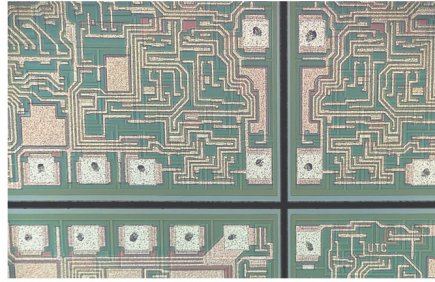
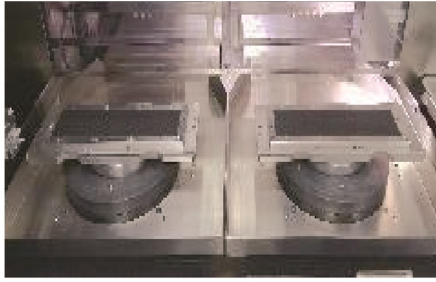
Double working platforms cycle work, make full use of each structure of the equipment, can enhance the cutting efficiency.

可配备全自动上料，进行传输定位、对准切割、刀痕检测、清洗、干燥，实现全自动运行模式，大大降低人力成本。

It can be equipped with fully automatic loading for transfer positioning, alignment cutting, knife mark detection, cleaning and drying, realizing fully automatic operation mode and greatly reducing labor cost.

不同产品切割转换快捷，只需更换定制治具即可完成。

Quick changeover from product to product cutting, simply by changing custom jigs.



### 功能 FUNCTION

注：「\*」为选配功能，支持个性化定制  
PS: 「\*」 is an optional feature that can be customized by the customer

#### 高精度非接触式测高

High-precision non-contact setup

#### 可配自动上料结构自动上料

Can be equipped with automatic loading structure automatic loading

#### 故障自纠错功能，多种位置实施检测

Fault self-correcting function, a variety of locations to implement the detection

#### 自动校准、自动刀痕检测功能

Automatic calibration & Automatic kerf check

#### 刀片破损检测系统

Blade breakage detection

#### 适应不同工艺，可选多种自动对准算法

Adapt to different processes with a variety of auto-alignment algorithms

#### 配备高真空单元，保证设备真空

Equipped with high vacuum unit to ensure the vacuum of the equipment

#### 软件定制：复杂切割功能等

Software customization: complex cutting functions, etc.

#### 工厂自动化模块，后续可接分选、贴膜等工艺设备

Factory automation module, subsequently can be connected to sorting, laminating and other process equipment

### 参数 PARAMETER

X轴 X axis	进刀速度输入范围 (mm/s)	Input range of feed speed(mm/s)	0.1-600
Y轴 Y axis	单步步进量 (mm)	Single step increment (mm)	0.0001
Y轴 Y axis	到位精度 (mm)	Reach accuracy (mm)	0.005以内/310 0.003以内/5 (单一误差) Within 0.005 / 310 Within 0.003 / 5 (single error)
Z轴 Z axis	重复精度 (mm)	Repetition accuracy (mm)	0.001
Z轴 Z axis	刀片最大尺寸 (mm)	Maximum size of blade (mm)	φ58
主轴 Spindle	配置方式	Configuration method	对向式双主轴+双工作台 Opposed dual-spindle+double-workbench
主轴 Spindle	输出功率 (kW)	Output power (kW)	1.8 (2.4可选) at 30,000 min-1 1.8 (2.4 optional) at 30,000 min-1
主轴 Spindle	转速范围 (min-1)	Speed range (min-1)	3,000 - 60,000
设备重量 (kg)		Weight (kg)	≈7,000
设备尺寸/W*D*H (mm)		Size /W*D*H (mm)	4,200*1,720*2,100

### 应用 APPLICATION

